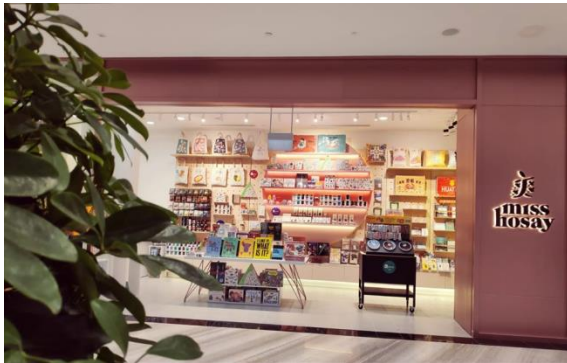


ShinnPark Pte Ltd



About us

ShinnPark Pte Ltd is an independent Singapore-based distribution company, specialising in retail and design since 2008.

We carry unique brands from UK, USA, Australia, Japan and Germany, which makes a great addition to the retail spaces, including speciality stores, departmental stores, bookstore, gift stores, artisanal cafes and pop-up stores.

To be in touch with consumer trends and to better understand our customers, we have just opened our flagship retail space called Miss Hosay, in Jewel Changi, featuring the world's biggest indoor waterfall.

At ShinnPark, we aim to enrich, enlighten and energise our consumers' lives with the latest, curated range of products.

Our Views on HR

We aim to share our knowledge and expertise in design and consumer behaviour.

At every step in our business, all of our team members are well-equipped to learn, and sell products within our store and apply the knowledge in our clients' training for their staff. We believe in the ability to do all aspects of the business so that every staff is best equipped to learn and apply the skills gathered in the company.

Student's Feedback

Interns who are stationed in our office and retail space is able to learn to handle stock inventory and learn to manage customers' expectations.

In this aspect, the role would be interesting to learn, especially from the start to the end of the last part of the sales transaction.

Collaborations with IHLs

The company have collaborated with IHLs in hiring interns from a various range of backgrounds, coming from business, product design and social marketing.